



Implementation Update

March 2023



Agenda

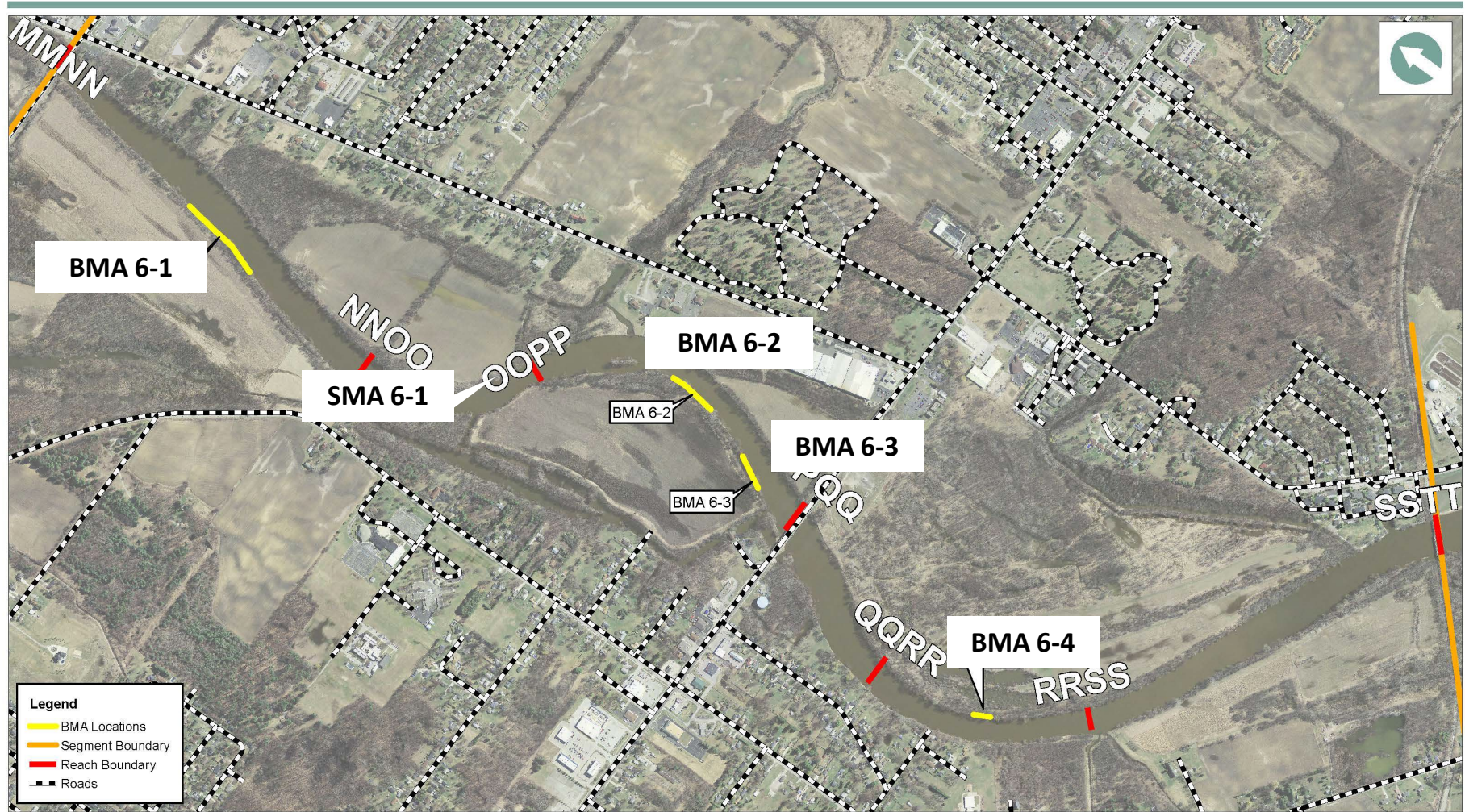
- Update on Activities
 - Tittabawassee River
 - Saginaw River
- Soil Contact Advisory Signs

Work Planned for 2023

- Bank Management Areas
 - Segment 6 and 7 BMAs
 - 6 Bank Areas
- Sediment Management Areas
 - SMA 6-1
 - SMA 7-1
- Floodplain
 - Segment 4

Segment 6 BMAs & SMA

DRAFT



NOTES:
Aerial Imagery Source: 2010 Kucera
ACRONYMS:
BMA: bank management area

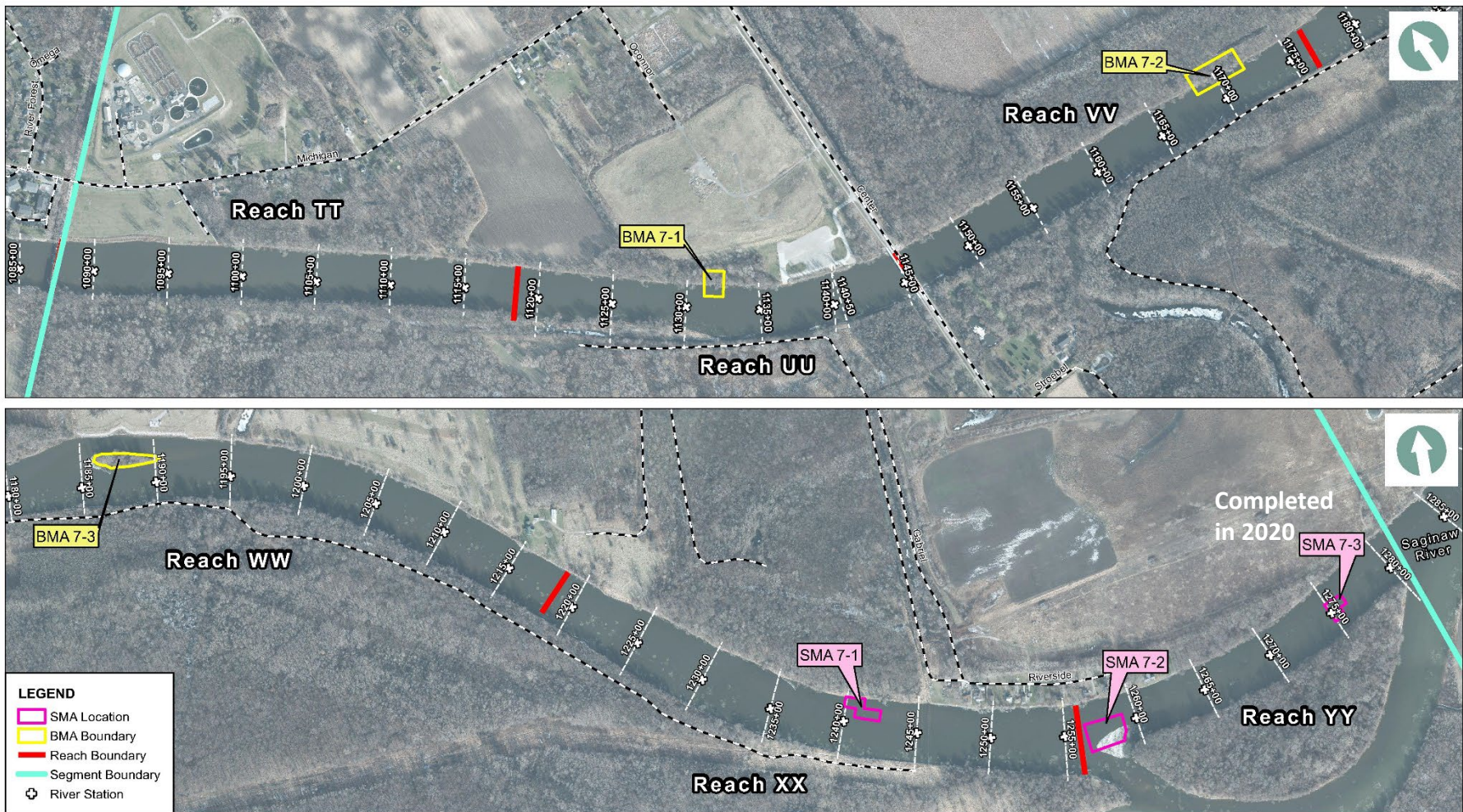
0 Feet 750 1,500
1 inch = 833 feet

Bank Management Areas in Segment 6
Segment 6 BMA Design and Implementation Work Plan

Figure
1

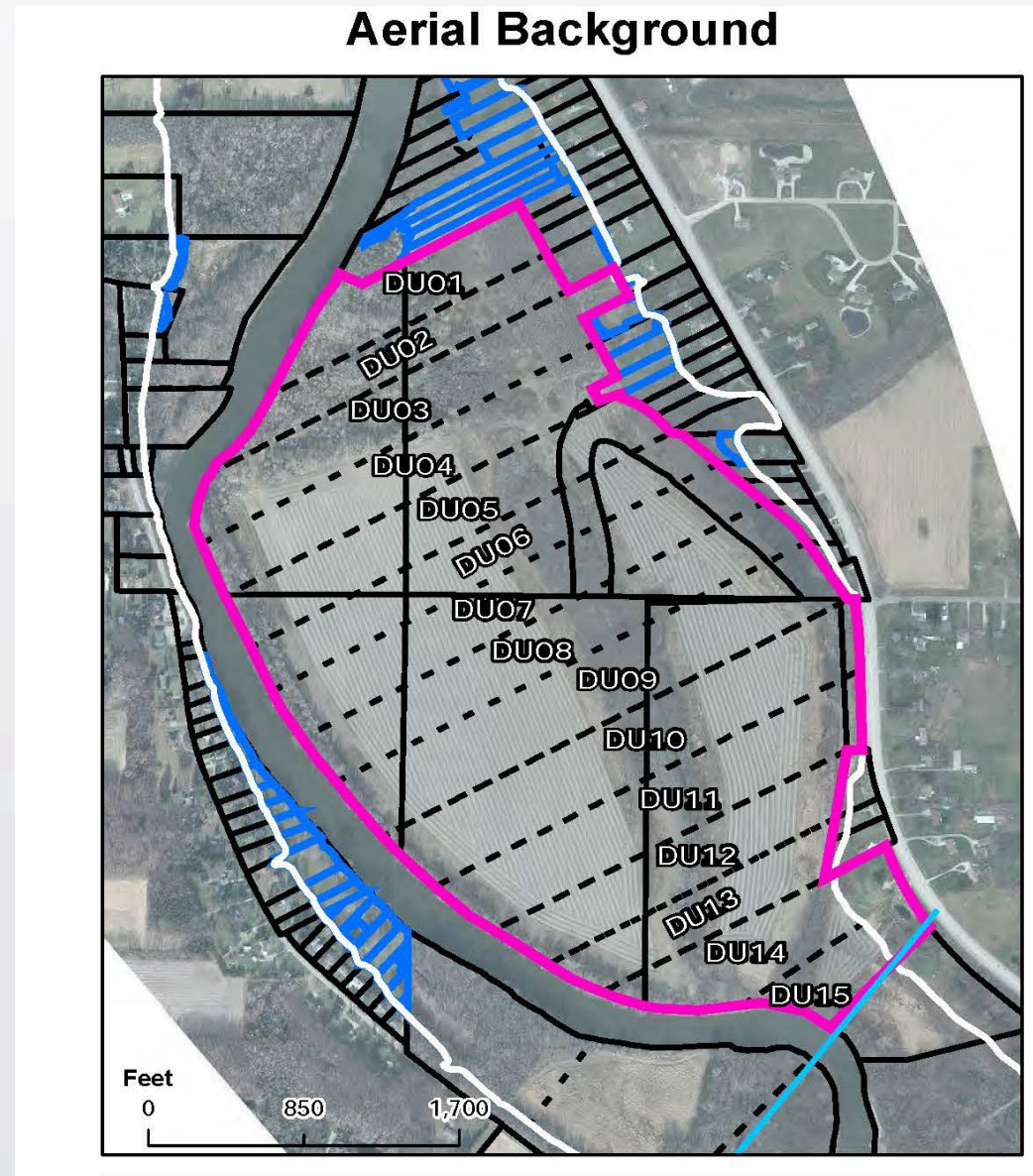
Segment 7 BMAs & SMAs

DRAFT



Segment 4 FP

- 6 decision units (DUs) require remedy
- Remedy
 - 6-inch removal in non-ag other areas
 - 1 foot removal in ag area

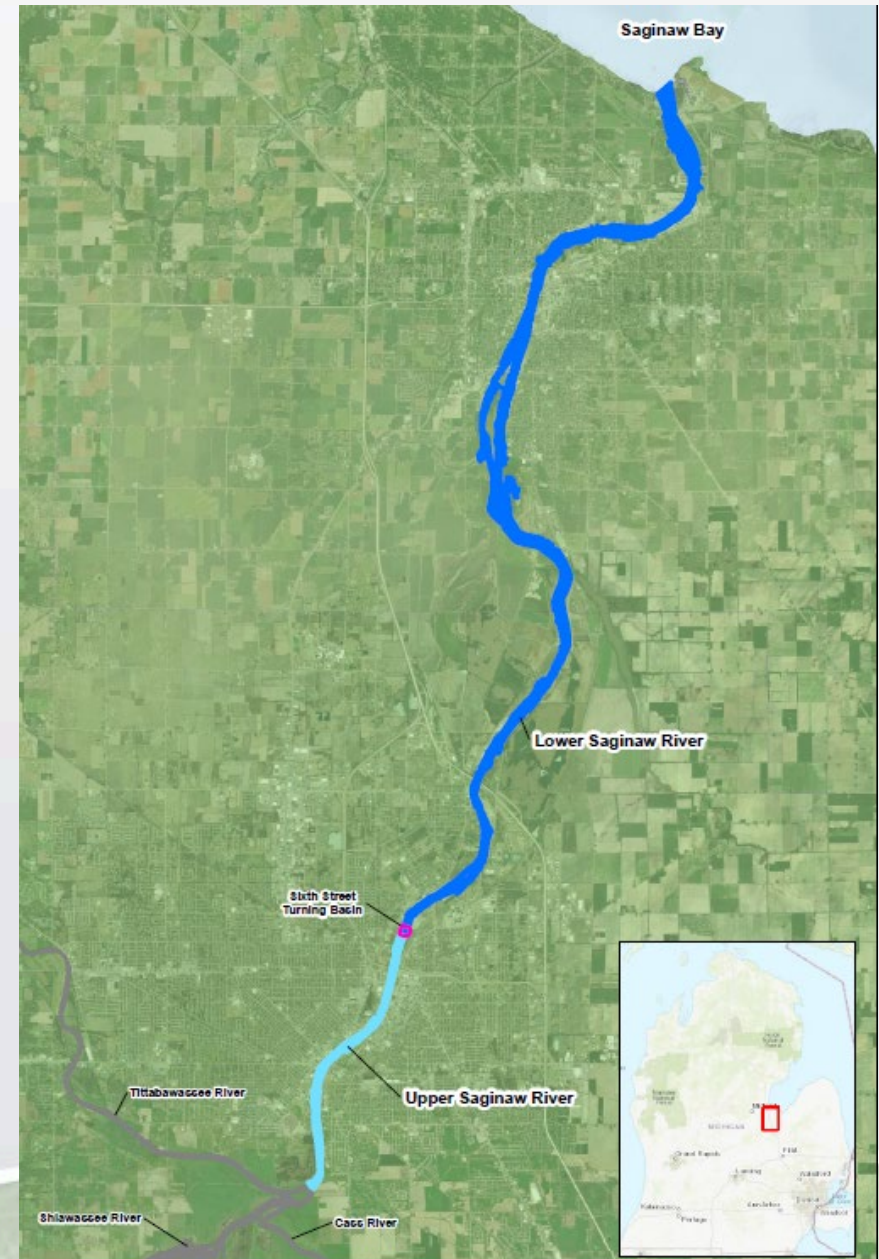


Saginaw River Update

- Dow submitted a Site Management Plan for the Saginaw River and Bay in 2021
 - Outlines tasks and a plan for the Saginaw River and Bay
 - Identifies segments for the Saginaw River and Bay
- Dow submitted a Current Condition Report for the Saginaw River and Bay in 2022
 - Assembly of the existing data and to provide the basis for defining the scope of the other tasks for the SR/B Site

Saginaw River Segments

- **Floodplain** – Includes floodplain for the entire length of the Saginaw River.
- **Upper Saginaw River** – From confluence of TR to the upstream end of the SSTB, approximately 4.8 river miles.
- **Lower Saginaw River** – From the SSTB to river mouth at Saginaw Bay, approximately 17 river miles
- **Saginaw Bay** – Includes area of bay near Saginaw River mouth and any other area where elevated TEQ levels may be present due to releases from the Dow Midland facility



Steps for Site Management

1. Evaluations and actions to address early exposure concerns – entire SR/B
2. Current Conditions Report – entire SR/B
3. Development of data gap / pilot study work plan – by segment
4. Response Proposal, including a basis for action that might be removal criteria or a risk screening – by segment
5. Remedy Design – by segment
6. Construction – by segment
7. Residual Risk Assessment – by segment or entire SR/B, but ultimately entire SR/B Site will be assessed
8. Monitoring – by segment but ultimately SR/B Site-wide

Steps for Site Management

- ✓ 1. Evaluations and actions to address early exposure concerns – entire SR/B
- ✓ 2. Current Conditions Report – entire SR/B
- ➔ 3. **Development of data gap / pilot study work plan – by segment**
4. Response Proposal, including a basis for action that might be removal criteria or a risk screening – by segment
5. Remedy Design – by segment
6. Construction – by segment
7. Residual Risk Assessment – by segment or entire SR/B, but ultimately entire SR/B Site will be assessed
8. Monitoring – by segment but ultimately SR/B Site-wide

Work Planned for 2023-Saginaw River

- Developing of Data Gap Work Plans and additional data collection
 - Floodplain Segment
 - Upper Saginaw River

Soil Contact Advisory Signs

- Signs are in public parks and other areas where the public access the river
 - Part of an early Interim Response Action
- All locations were evaluated under the 2015 Floodplain AOC
 - No floodplain remedy was required in these areas
- Dow drafted a Tech Memo summarizing locations of signs and proposed removal of the signs



Soil Contact Advisory Signs

- EPA, in consultation, with EGLE and MDHHS, have approved the removal of the signs
- Communication to municipalities will begin in late March with sign removal to follow



End 😊