



Saginaw - Tittabawassee Rivers Contamination Community Advisory Group

www.saginawcag.org

Overview of river cleanup and what to expect

Information is distilled from EPA presentations. The full presentations are linked on the web at <http://www.saginawcag.org/documents>



The Tittabawassee River cleanup project starts along the Dow Chemical Property in Midland and runs about 21 miles to the Saginaw River in Saginaw. Map at left. There is a larger version of the map on page 3.

To make the project manageable the river is divided into seven segments. [Page 3 has a map showing recognizable landmarks](#)

Work is being done both in the river and in the floodplain.

Projected time line

2018

Segment 4 & 5

- Continue field work

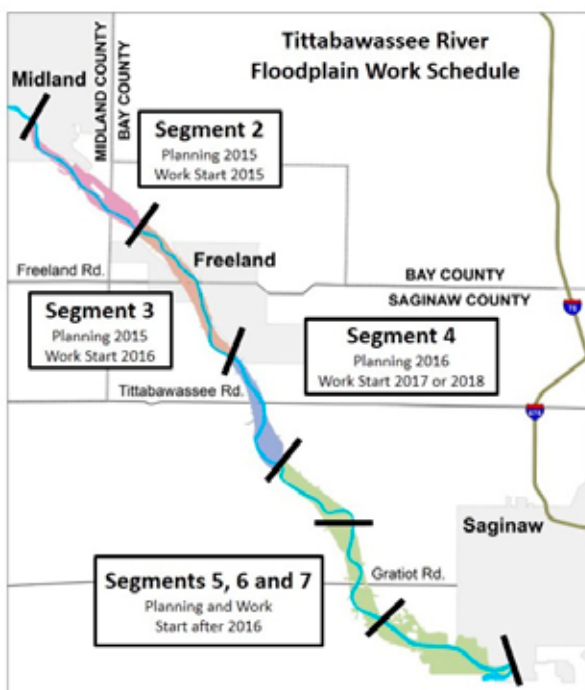
Segment 6 & 7

- EPA proposes cleanup plan to public for segment 6 & 7

2019

- Possible work in segment 6 & 7

EPA's plan is to conduct cleanups from upstream to downstream, segment-by-segment, with river, bank and floodplain work being done concurrently as much as possible.



Map at left shows potential times work will start in the floodplain in various segments.

It is difficult to define exact segment boundaries because they don't often start or stop at common landmarks like a road or drain.

There is detailed information on the web under the **MEETING SUMMARIES AND PRESENTATIONS** tab



At left are two examples of working being done on the river.

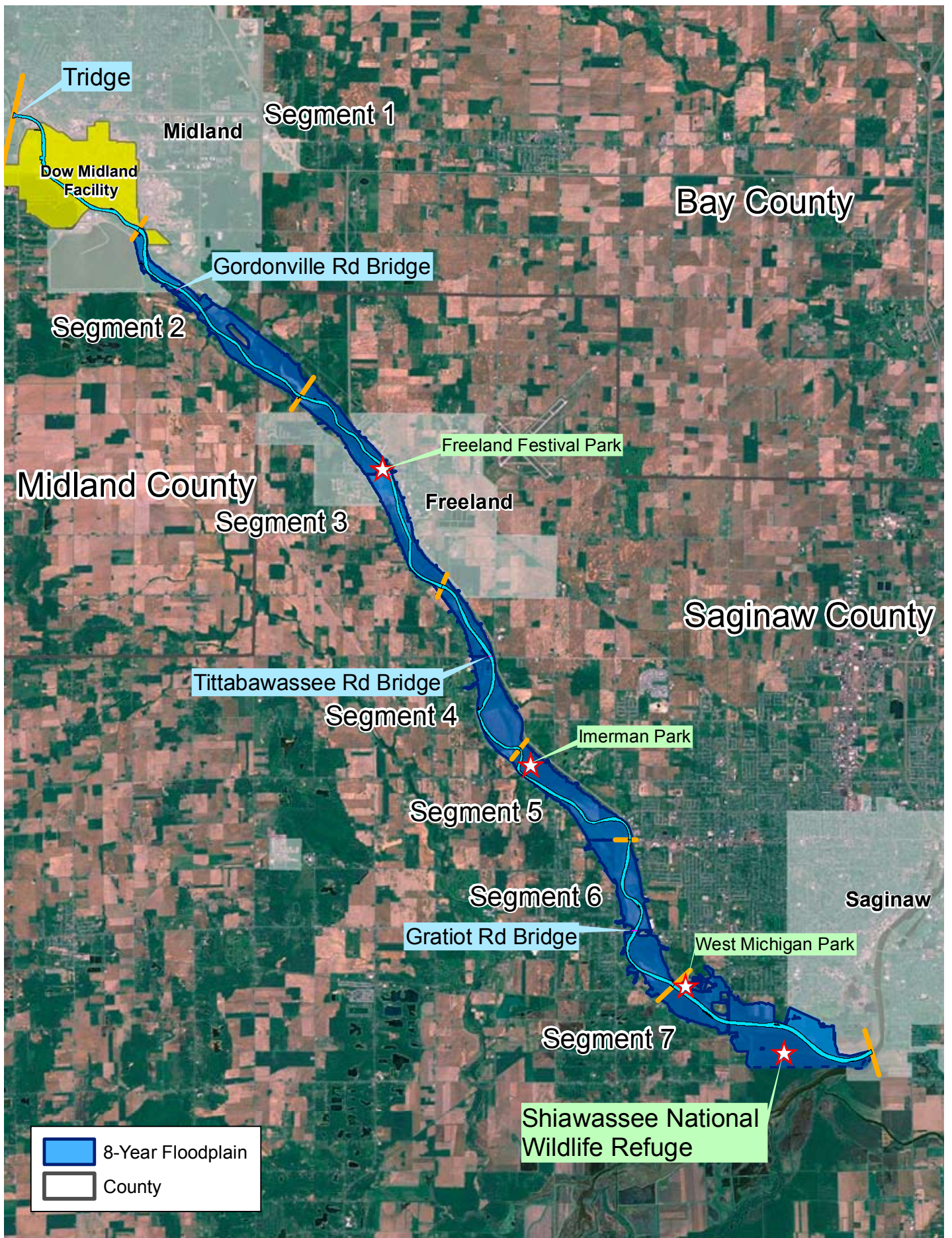
Top photo shows a Silt Management Area (SMA). In this project sheet piling is driven into the river bottom. The water is pumped out and contaminated soil is removed. The sheet piling is then removed.



Bottom photo shows a Bank Management Area (BMA). Contaminated material is removed and bank reformed. The area is planted with native plants.

Both of these projects were just downstream from the Gordonville bridge and were completed in 2014.





0 0.5 1 2
Miles



Tittabawassee River 8-Year Floodplain